

THESE DRAWINGS HAVE BEEN EXTRACTED FROM AND CONFORM TO PREVIOUS APPROVED BUILDING SYSTEM DRAWINGS

DATE: Aug. 8, 22

ENGINEERING MANAGER

ENGINEER'S / ARCHITECT'S SEAL

APPROVER'S SEAL

MODIFICATIONS

WINDOW GUARDS ON-SITE PER R312.2 IF:  
-WINDOW SILL UNDER 24" ABOVE FINISHED FLOOR AND  
-WINDOW OPENING MORE THAN 72" ABOVE FINISHED GRADE.

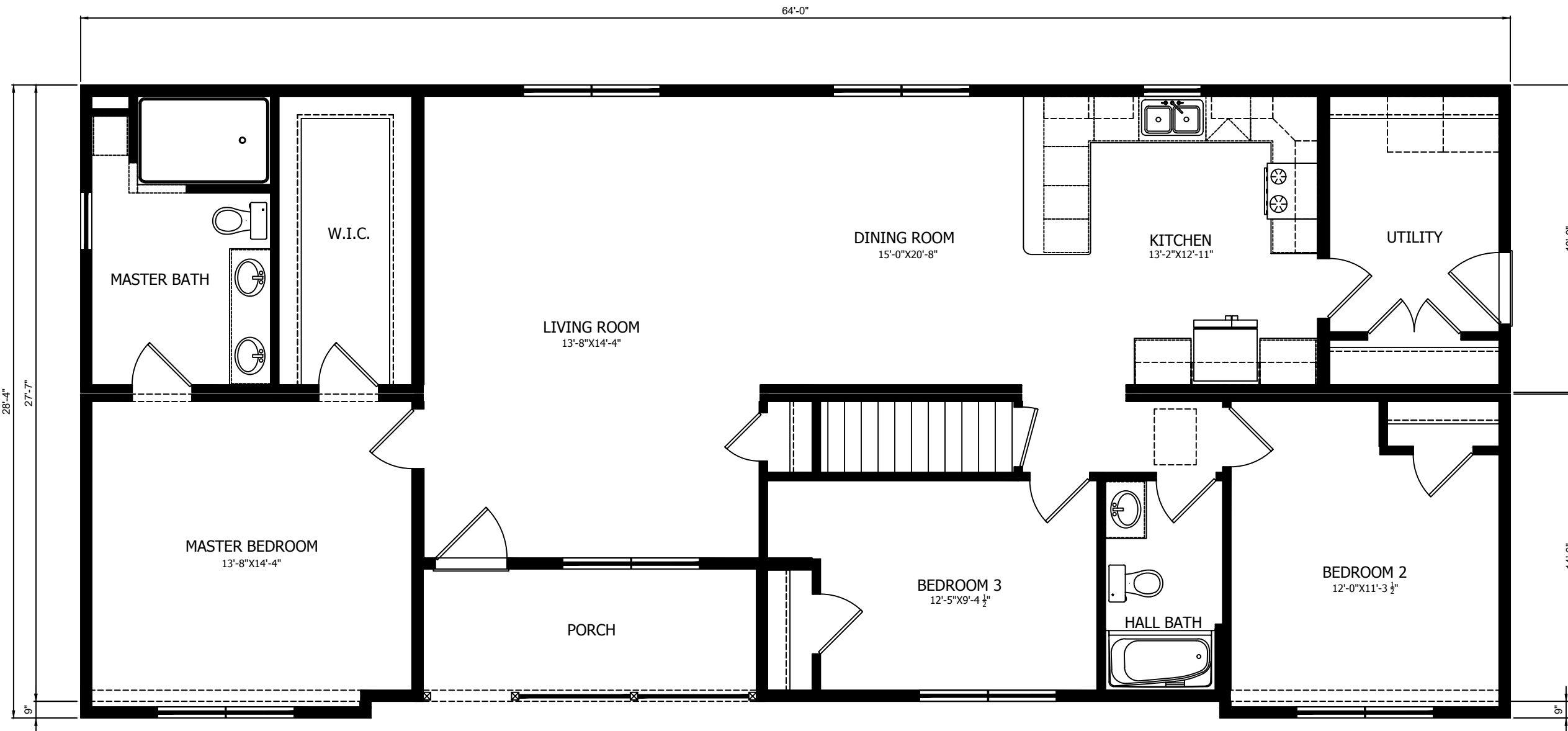
TITLE:  
**LITERATURE**

MODEL:  
**2693**  
28x64

DATE: 08-08-22 SCALE: 3/16" = 1'  
DRAWN BY: LZ CHECKED BY:  
BUILDER: SUPERIOR/DRB  
CUSTOMER: STOCK

FILENAME: Q-29381  
SHEET NO.:  
**LIT**

PAGE:  
**PROPRIETARY AND CONFIDENTIAL**  
THESE DRAWINGS AND SPECIFICATIONS ARE ORIGINAL.  
PROPRIETARY AND CONFIDENTIAL MATERIALS OF CHAMPION.  
COPYRIGHT © 1976-2022 BY CHAMPION



THESE DRAWINGS HAVE BEEN EXTRACTED FROM AND CONFORM TO PREVIOUS APPROVED BUILDING SYSTEM DRAWINGS

DATE: Aug. 8, 22

ENGINEERING MANAGER

ENGINEER'S / ARCHITECT'S SEAL

**ELEVATION FOR ILLUSTRATION ONLY NOT TO BE SCALED**

NOTES:

- 1. EXTERIOR LIGHTS ARE SHIPPED LOOSE FOR FIELD INSTALLATION BY OTHERS TO PRE-WIRED BOX.
- 2. SIDING FOR ENDS IS SHIPPED LOOSE FOR FIELD INSTALLATION BY OTHERS.

- 3. STOOPS, STAIRS, HANDRAILS, GUTTERS, DOWNSPOUTS AND SPLASH BLOCKS ARE FURNISHED AND INSTALLED BY OTHERS IN ACCORDANCE WITH STATE AND LOCAL CODES.
- 4. SIDING SHOWN IS 4/4 VINYL, VENTED VINYL SOFFIT & ALUMINUM FASCIA

- 5. VINYL SHUTTERS ARE OPTIONAL
- 6. THE NUMBER OF WINDOWS WILL VARY ACCORDING TO INDIVIDUAL FLOOR PLAN.
- 7. MASONRY VENEER OR OTHER FOUNDATION SIDING IS FURNISHED AND INSTALLED BY OTHERS.

- 8. BOTTOM ROW OF SIDING IS SHIPPED LOOSE AND INSTALLED BY BUILDER ON SITE

RIDGE VENT SHIP-LOOSE & INSTALLED BY BUILDER (MUST COVER 60% OF RIDGE)



FRONT ELEVATION  
ACCESS TO GRADE  
ONSITE BY OTHERS

APPROVER'S SEAL

MODIFICATIONS

TITLE:  
**FRONT ELEVATION**

MODEL:  
**2693**  
28x64

DATE: 08-08-22 SCALE: NTS  
DRAWN BY: LZ CHECKED BY:  
BUILDER: SUPERIOR/DRB  
CUSTOMER: STOCK

FILENAME: Q-29381  
SHEET NO.:  
**AE-101**

PAGE:

**PROPRIETARY AND CONFIDENTIAL**  
THESE DRAWINGS AND SPECIFICATIONS ARE ORIGINAL PROPRIETARY AND CONFIDENTIAL MATERIALS OF CHAMPION. COPYRIGHT © 1976-2022 BY CHAMPION